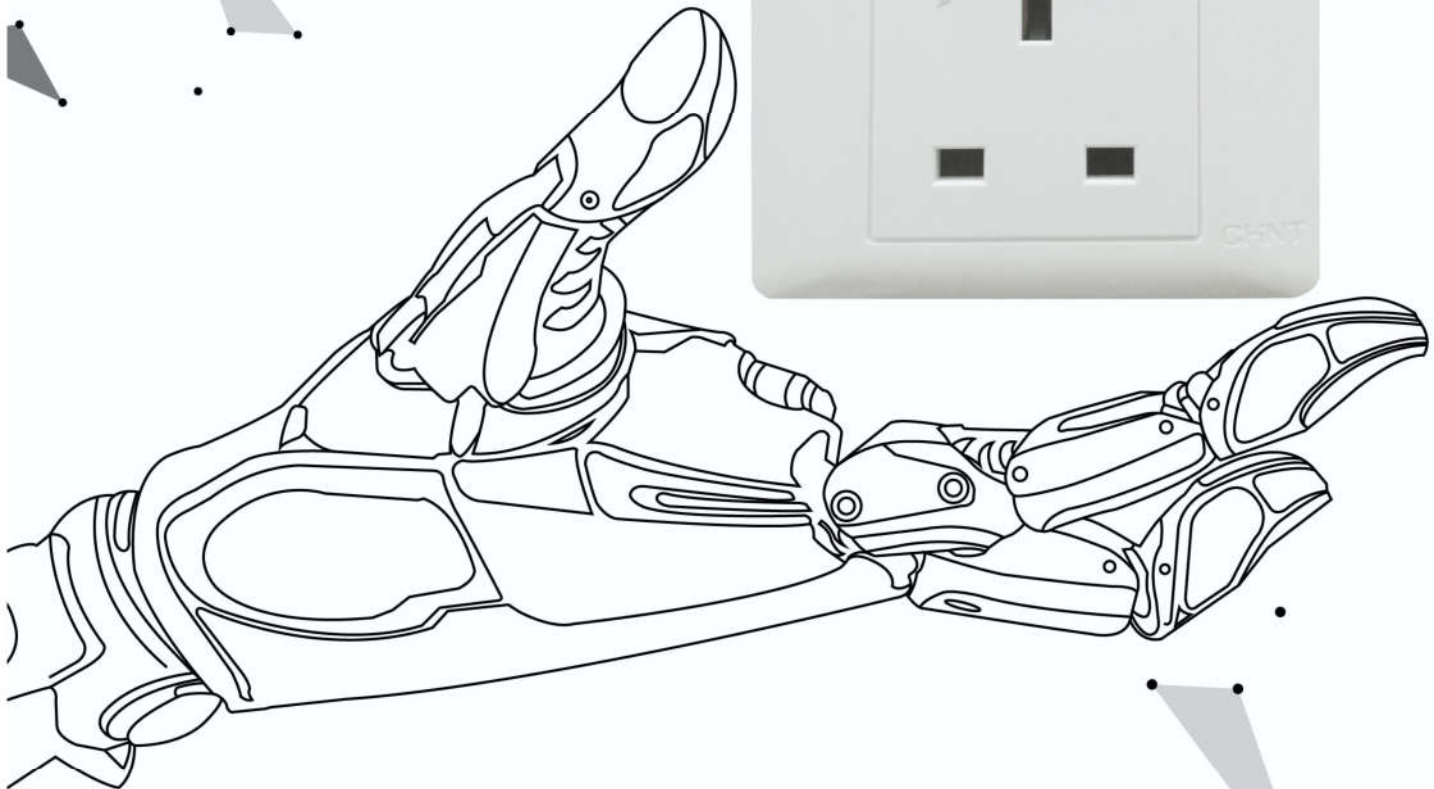


CHNT
SINCE 1984

Switch on the **BEST** choice



OPT - Seiko Switch Standard

CHINT ELECTRIC OPT " Optimized Production Technology " is engineered to ensure the design, the selection of materials and the production and testing of our products achieves the industry highest standards.

OPT SEIKO SWITCH STANDARD subscribing to our user's demand, social responsibilities, stringent material selection, technology innovations, precision manufacturing and testing and inspection, CHINT ELECTRIC 100 professionals and research teams with the cooperation of world renowned institutions is able to blend together highly technically innovative products with exclusive designs featuring eastern fashion and culture.

SUPREME MATERIAL SELECTION is attained by securing high quality plastic from BAYER of GERMANY. High conductivity copper of low resistivity and silver nickel which reduces temperature rise are the metal components incorporated into our products.

PRECISION MANUFACTURING involves a total of 176 and 68 assemblies and quality control points respectively starting from moulds to materials processing and from parts to assembly.

NATIONAL LABORATORY is the industry first on line 'one by one' automatic inspection system involving 46 test points. Each tested and certified product is then issued an authentication code.

CHINT Warranty Regulations

CHINT WARRANTY on electrical accessories products is 12 years and the validity period for the replacement of any defective products found upon the opening of sealed packages is 15 days from the date of purchase. Damages caused by abnormal voltages, operation without following the user manual and unauthorized repair is not covered under this warranty.

PASSION, HIGH EFFICIENCY AND CUSTOMER CARE is our motto. We at CHINT and our representatives assures you of our reliable after sales service at all times.

Zhejiang CHINT Electrics Co.,Ltd
June 28th, 2011

12 YEARS WARRANTY

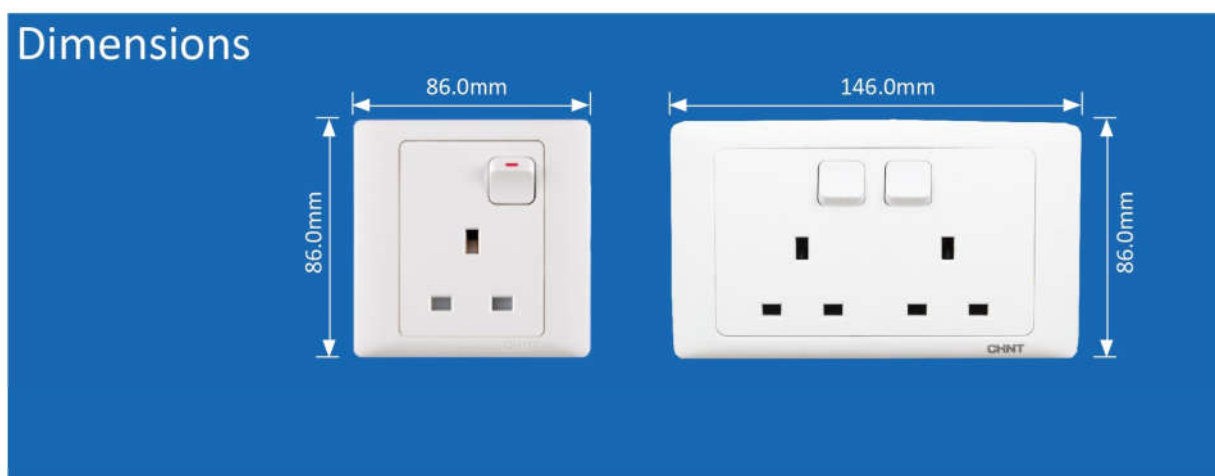
浙江正泰电器股份有限公司
ZHEJIANG CHINT ELECTRICS CO.,LTD



Confirm to International Standards

The products are comply to British / IEC and Malaysia standards.

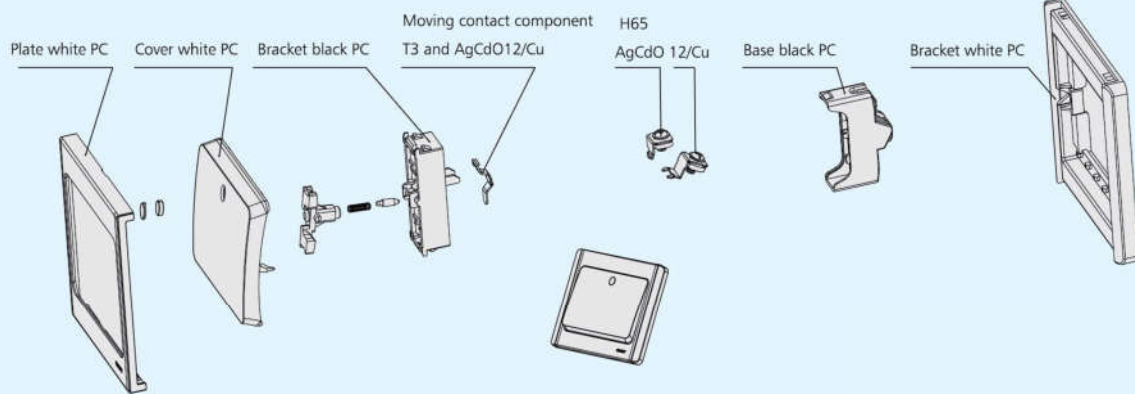
	British Standard/IEC	Malaysia Standard
10A/AX Light Switches (10AX switch rating means no need to derate it's current rating when connected to florescent lamps or inductive loads)	IEC/BSEN 60669	MS IEC 60669
20AX DP Switches	IEC/BSEN 60669	MS IEC 60669
13A Socket Outlets	BS1363	MS 589
15A Socket Outlets	BS 546	MS 1577
Shaver Unit	IES/BSEN 6155	-
DATA Communication Outlets	IEC 60607	-
10A Universal Socket Outlet	IEC 60884	-
Dimmer/Fan Speed Controller	IEC 60669	-



General Compose and Material Intruccion



CHINT switch and socket show elegantly and gracefully with excellent design and durability, which the mechanical life of switches is 80,000 times while of sockets is 20,000 times. Pay attention to the figures below, which make the material of each component clearly.



NEW7G series



NEW7G PREMIUM series



WEATHERPROOF series



METALCLAD series



NEW7G series

A slim, trim profile, pleasing to the eye, clean and refined, NEW7G series is a concise movement that perfectly complements the modern lifestyle. Inspired by simple, elegant minimalism of supremely influential primitive simplicity movement, every piece in this robustly constructed range expresses a pleasing from following function.

Unmarred by visible fastenings, the sleek clean fluent lines present a cool refined touch of style to almost any interior. Make the world of Central Asia and Arabia so much.



Standard switches Technical Specification

Standard(s): IEC60669
Rating: 250V AC, 50HZ, 10A
Switch type: Single pole (Cat.027, 029 DP switch 20A)
Fixing centers: 60mm
Working temperature: -20°C~50°C
Applies: Suits Cat. NEH1-001A Flush box.

Standard sockets Technical Specification

Standard(s): BS1363
Rating: 250VAC, 50HZ, 13A, 5A, 15A
socket type: Single pole
Fixing centers: 60mm
Working temperature: -20°C~50°C
Applies: Suits Cat. NEH1-001A Flush box.

NEW7G PREMIUM series



Royal Gold(02)



Classic Sliver(08)



Platinum Sliver (01)

Standard switches Technical Specification

Standard(s): IEC60669
Rating: 250V AC, 50HZ, 10A
Switch type: Single pole (Cat.027, 029 DP switch 20A)
Fixing centers: 60mm
Working temperature: -20°C~50°C
Applies: Suits Cat. NEH1-001A Flush box.

Standard sockets Technical Specification

Standard(s): BS1363
Rating: 250VAC, 50HZ, 13A, 5A, 15A
socket type: Single pole
Fixing centers: 60mm
Working temperature: -20°C~50°C
Applies: Suits Cat. NEH1-001A Flush box.

NEW7G SERIES

- NEW7-G001M
10A 1-gang intermediate switch
- NEW7-G00100A
10A 250V 1-gang 1-way switch
- NEW7-G00200A
10A 250V 1-gang 2-way switch
- NEW7-G00300A
10A 250V 2-gang 1-way switch
- NEW7-G00400A
10A 250V 2-gang 2-way switch
- NEW7-G00500A
10A 250V 3-gang 1-way switch
- NEW7-G00600A
10A 250V 3-gang 2-way switch
- NEW7-G013B
10A 250V 4-gang 1-way switch
- NEW7-G015B
10A 250V 4-gang 2-way switch
- NEW7-G00150
DP switch (with light) 20A 250V 1-Gang 1-Way
- NEW7-G00250
DP switch (with light) 20A 250V 1-Gang 2-Way
- NEW7-G00160
DP switch (with light) 32A 250V 1-Gang
- NEW7-G30200A
10A 250V 1-Gang doorbell push button switch



- **NEW7-G42700**
13A 250V 1-gang 3-pin switched socket



- **NEW7-G427KL**
13A 250V 1-gang 3-pin switched socket (indicator)



- **NEW7-G42720**
USB socket power come with 1 gang 3 pin 13A switch socket.



- **NEW7-G442**
10A 250V 1-gang 3-pin Multi-functional switched socket



- **NEW7-G13110**
10A 250V 1-Gang 3-Pin universal socket with USB 2.1A 5V



- **NEW7-G429K**
15A 250V 1-gang 3-pin switched socket



- **NEW7-G429KL**
15A 250V 1-gang 3-pin switched socket (indicator)



- **NEW7-41910**
13A 250V 2-gang 3-pin switched socket



NEW7G SERIES

NEW7G SERIES

- NEW7-G20100A
1-gang TV terminal socket



- NEW7-G32800
1-gang TV terminal socket + 1-gang TVF socket



- NEW7-G32900
TV/FM/SAT socket outlet w/o looping



- NEW7-G20300A
1-gang 4-wire telephone socket



- NEW7-G20800A
2-gang 4-wire telephone socket



- NEW7-G20400A
1-gang 8-wire data socket (AMP)



- NEW7-G205
2-gang 8-wire data socket (AMP)



- NEW7-G20410
1-gang 8-wire data (cat 6)



- NEW20510
2-gang 8-wire data socket (cat 6)



- NEW7-G20910A
1-gang 4-wire telephone socket + 1-gang 8-wire socket (cat 6)



- NEW7-G21200A
1-gang TV terminal socket + 1-gang 8-wire socket (cat 6)



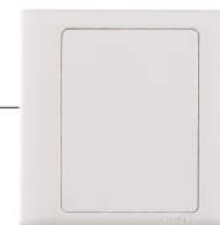
- NEW7-G305
1-gang light dimmer 500W



- NEW7-G306
1-gang speed controller 250W



- NEW7-G951
Blank plate



NEW7G SERIES

NEW7G SERIES

- **NEW7-G30200A/PRESS**
10A 250V 1-gang "PRESS" pushbutton switch



- **NEW7-G30210**
10A 250V 2-gang "PRESS" pushbutton switch



- **NEW7-Q32300**
1-gang LED doorbell push button 1-gang
"please do not disturb, please clean up"



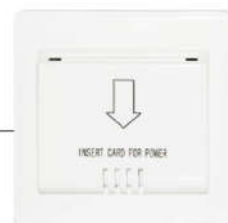
- **NEW7-G007B/D/C**
10A 250V 2-gang 2-way "DO NOT DISTURB & CLEAN UP"
switch



- **NEW7-300**
1-gang shaver socket 110V/240V (146type)



- **NEG1-0310 (General Type)**
NEG1-0320 (Contacting Type)
NEG1-0330 (Inductive Type, 125kHz)
NEG1-0340 (Inductive Type, 13.56MHz)
1-gang IC card Operated for power MAX 30A



- **NES-00100**
Wifi Router

